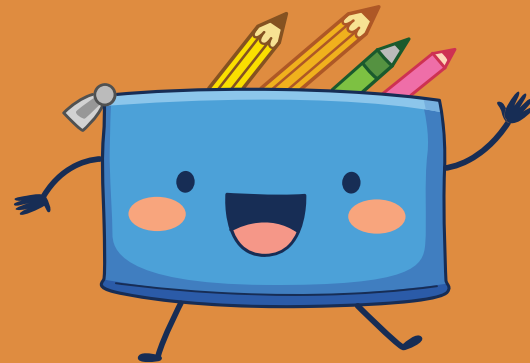
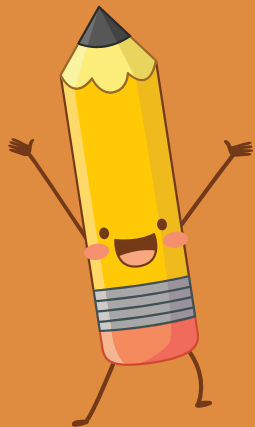


Wolsey House Primary School

Year 1

Spring 2



Welcome Parents!

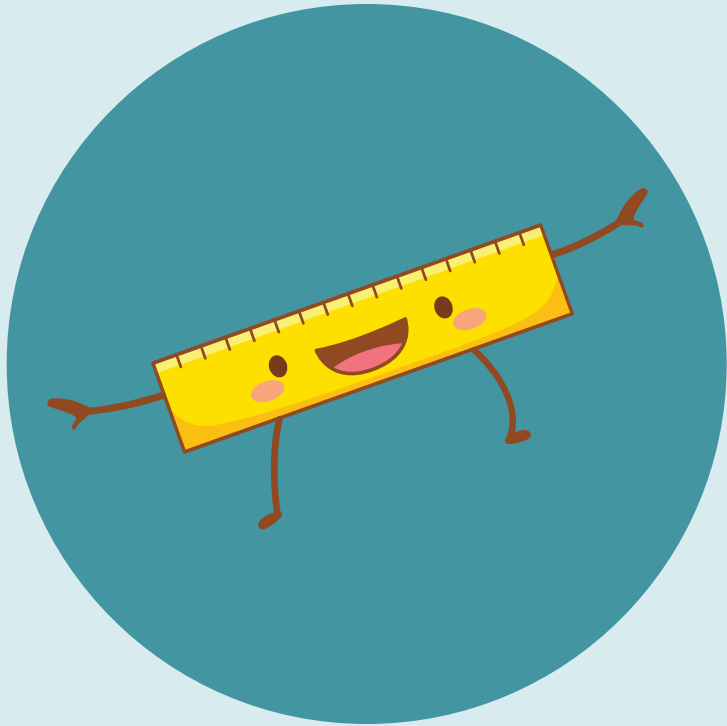
- Welcome to our Year 1 page.
- Here, you will find the following information:
 - Our core values
 - Staff who work in Year 1
 - The Year 1 school day
 - Our P.E days
 - Special days
 - WEDUC
 - Attendance
 - School uniform
 - Behaviour
 - Ways you can help your child at home
 - Childline



Our Core Values

Creating a school where everyone is safe, happy and healthy and where everyone strives to live by **our 6 core values**:

- Responsibility.
- Respect.
- Honesty.
- Resilience.
- Aspiration.
- Cooperation.





Staff who work in Year 1

Teachers

Ladybirds – Mrs Collins (Year Team Leader)

Bumblebees – Miss Barden

Butterflies – Miss Worrall

Teaching Assistants

Miss Barden

Mrs Borg

Mrs Rao

Mrs Harrison

Miss Kaur

Miss Sheikh

The Year 1 school day

8:55am – children line up on playground and class teacher brings them into class.

10:15am – break time

11.45pm – lunch time

3:15pm – home time

Year 1 P.E days

Ladybirds

Monday – Invasion games

Wednesday – Target games

Bumblebees

Monday – Invasion games

Wednesday – Target games

Butterflies

Monday – Invasion games

Wednesday – Target games



Special days

26th February – Year 1 Families Day

5th March - World Book Day

11th March - Science Fair



Weduc

We use **ReachMoreParents (also known as Weduc)** as our main communication platform between school and home. This website and app are where we share all key information with parents and carers, including announcements, updates about school events and important reminders.

By using ReachMoreParents, we ensure that parents receive timely and accurate information straight from the school in a secure and convenient way.

Through ReachMoreParents, parents can also easily access details about school activities, such as trips, clubs and special events. The platform allows us to send messages directly to each family so parents never miss out on important updates. It's much more efficient and environmentally friendly than sending paper letters home and it means that communication is consistently up to date. It also allows parents and carers to report a child's absence.

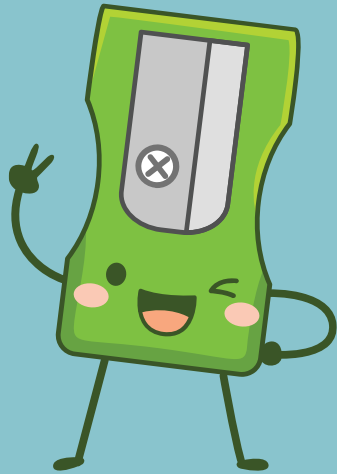
Another vital feature of ReachMoreParents is its **parents' evening booking system**. Parents are able to view available time slots and book appointments with teachers directly through the app or website. This gives families flexibility to choose times that suit them and helps the school organise these events smoothly.

Overall, ReachMoreParents plays a crucial role in strengthening the partnership between school and home. It helps parents stay informed, engaged, and involved in their child's education. By centralising communication and making it easy for parents to access key information and services, ReachMoreParents supports a positive and connected school community.

The logo for ReachMoreParents by weduc is contained within a white rounded square with a red border. The text 'reach' is in a bold, dark grey sans-serif font. 'more' is in a red sans-serif font, with a white play button icon (a triangle pointing right) inside the letter 'o'. 'parents' is in a bold, dark grey sans-serif font. 'by weduc' is in a smaller, dark grey sans-serif font at the bottom.

reach
more
parents
by weduc

Attendance



Getting Your Child to School Really Matters



Did You Know... ?

In a School Year, If Your Child is Late Every Day By...	Your Child Would Have Lost Approximately...	or They Would Have Missed Approximately...
5 Minutes	3.5 Days from School	20 Lessons
10 Minutes	7 Days from School	41 Lessons
15 Minutes	10 Days from School	55 Lessons
20 Minutes	14.5 Days from School	82 Lessons
30 Minutes	22 Days from School	123 Lessons

Please Encourage Punctuality to Maintain Attendance

ABSENCE = LOST OPPORTUNITY



Did You Know... ?

If Your Child's Attendance During the School Year...	Your Child Would Have Lost Approximately...	or They Would Have Missed Approximately...
was 95%	9 Days from School	50 Lessons
was 90%	19 Days from School	100 Lessons
was 85%	29 Days from School	150 Lessons
was 80%	38 Days from School	200 Lessons
was 75%	48 Days from School	250 Lessons

Getting Your Child to School Really Matters

School Uniform

For the whole school

Red or black jumper, cardigan or fleece. No hoodies

Grey or black trousers, skirt or pinafore dress

In the summer months a red and white gingham dress may be worn

Nursery, Reception, Years 1 and Year 2

Red or white polo shirt or white shirt or blouse

Years 3, 4, 5 and 6

White or Black polo shirt or white shirt or blouse

Suitable footwear must be worn. No Crocs



Jewellery

Stud earrings only. No necklaces or bracelets

Earrings will need to be taken out or covered with a plaster whilst doing PE

Uniform items with the school logo can be purchased from <https://myclothing.com>

There is no requirement for children to wear uniform with the school's logo on, but there is an expectation that the children wear school colours, i.e. red or black jumper. These can be bought from a range of shops e.g. Asda, Tesco.

Book Bags and PE Bags printed with the school logo can be purchased on the Parent Pay app and collected from the school office

PE Kit

Your child will need to come into school dressed in their PE kit on their PE day

Indoor: Red or white t-shirt, black shorts and plimsoles

Outdoor: Jogging bottoms, zip up jacket or sweatshirt and trainers. No hoodies

Indoor



Outdoor



Behaviour



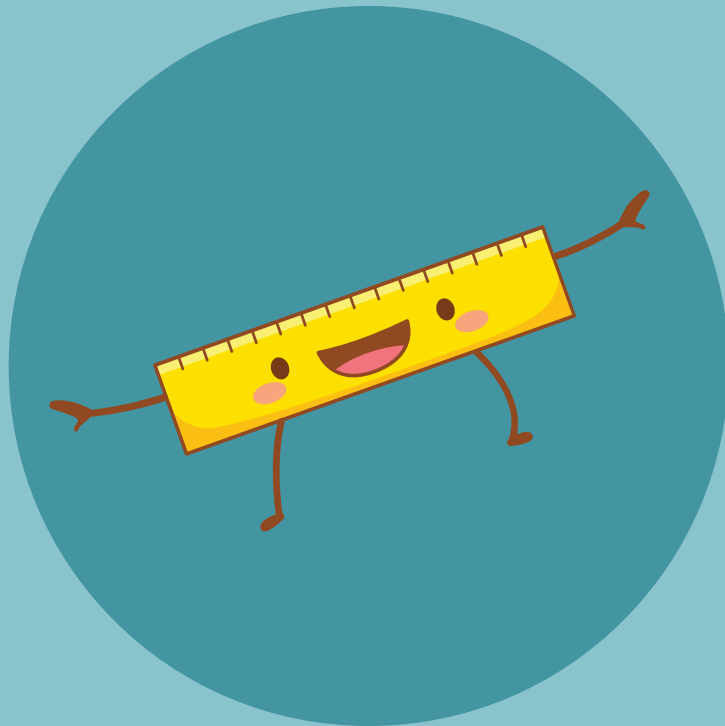
IT'S GOOD TO BE GREEN

We use the Good to be Green behaviour reward system. In each class from Years 1 to 6 there is a Good to be Green wall chart. Every child has a green card, showing that they are "Good to be Green". At the start of every day, every child will be green. During the day, children who follow the school and class rules stay on a green card.

However, children who make the wrong choices and don't follow the rules will be given a yellow warning card. If they continue to make the wrong choices, they will be given a red Consequence card. In this instance, staff will carry out some restorative work with the child in an attempt to ensure that there won't be any repeated behaviour.

Wolsey Warehouse tokens

Warehouse tokens are awarded to a child for displaying good behaviour, producing work to the best of their ability, displaying our school values and for having 100% attendance each school week. Each child is allocated a container, which acts as a wallet. Tickets are cumulative and, on the Friday, at the end of each half-term, all children enjoy visiting the **Wolsey Warehouse** with their class teacher to choose a reward.





Ways you can help your child at home

- Homework should be completed weekly.
- Practise phonics daily, recognising the sounds and using these sounds to blend words.
- Practise spellings at home ready for their quiz on Friday.
- Daily reading helps your child to become a fluent and confident reader. Asking your child questions based on their reading book also improves comprehension skills.
- Accelerated Reader quizzes assess how much your child has read and understood.



Childline has launched a website aimed at children under the age of 12. This provides age appropriate content on topics including: bullying, family, friends, feelings, school, abuse and staying safe. It also includes games and therapeutic tools for young visitors to play and express how they are feeling.

It can be accessed here: <https://www.childline.org.uk/kids>