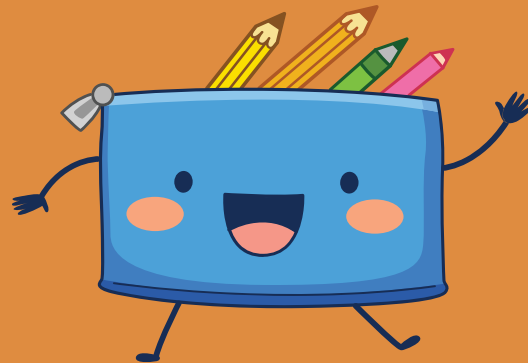
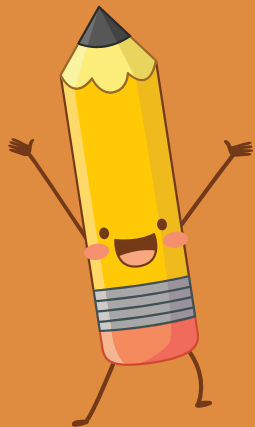


Wolsey House Primary School

# Year 4

Summer 1



# Welcome Parents!

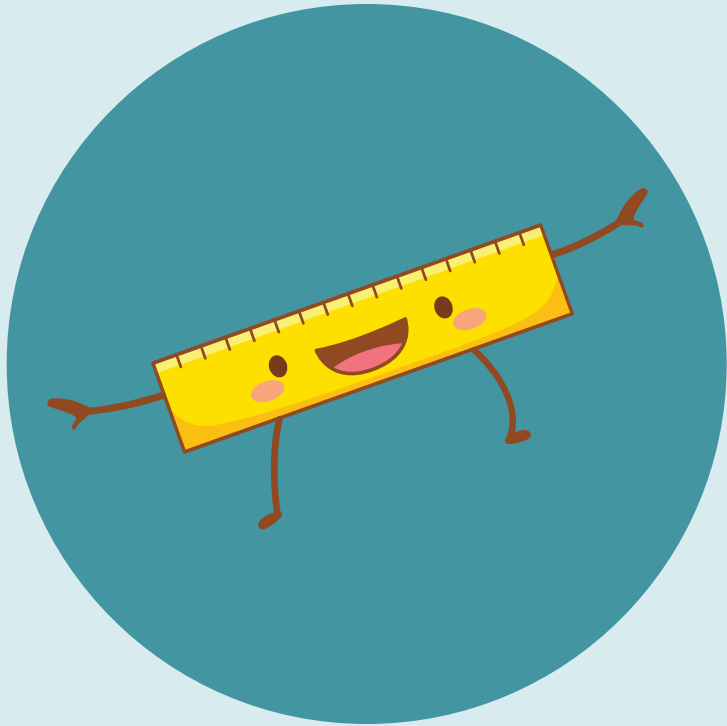
- Welcome to our Year 4 page.
- Here, you will find the following information:
  - Our core values
  - Staff who work in Year 4
  - The Year 4 school day
  - Our P.E days
  - Special days
  - WEDUC
  - Attendance
  - School uniform
  - Behaviour
  - Ways you can help your child at home
  - Childline



# Our Core Values

Creating a school where everyone is safe, happy and healthy and where everyone strives to live by **our 6 core values**:

- Responsibility.
- Respect.
- Honesty.
- Resilience.
- Aspiration.
- Cooperation.





# Staff who work in Year 4

## Teachers

**Class 3** – Mrs Satchwell (Year Team Leader)

**Class 4** – Miss Modhvadiya

**Class 5** – Mr Ismail, Mrs Coplin and Mr Wheat

## Teaching Assistants

Mrs Kathrecha

Mrs Sohansoha

Miss Jama

Miss Bativala

# The Year 4 school day

---

8:40am – children line up on playground and class teacher brings them into class.

10:35am – break time

12:10pm – lunch time

3:10pm – home time

# Year 4 P.E days

## **Class 3**

Tuesday – Athletics

Thursday – Tennis

## **Class 4**

Tuesday – Athletics

Thursday – Rugby

## **Class 5**

Tuesday – Tennis

Friday - Athletics



# Special days

Tuesday 28<sup>th</sup> April and Wednesday 29<sup>th</sup> April – Class 4 Art Days

Thursday 30<sup>th</sup> April and Friday 1<sup>st</sup> May - Class 3 Art Days

Wednesday 6<sup>th</sup> May and Thursday 7<sup>th</sup> May - Class 5 Art Days

Monday 18<sup>th</sup> May - Class 3 and 4 Into University sessions

Friday 22<sup>nd</sup> May – Class 5 Into University session

# Weduc

We use **ReachMoreParents (also known as Weduc)** as our main communication platform between school and home. This website and app are where we share all key information with parents and carers, including announcements, updates about school events and important reminders.

By using ReachMoreParents, we ensure that parents receive timely and accurate information straight from the school in a secure and convenient way.

Through ReachMoreParents, parents can also easily access details about school activities, such as trips, clubs and special events. The platform allows us to send messages directly to each family so parents never miss out on important updates. It's much more efficient and environmentally friendly than sending paper letters home and it means that communication is consistently up to date. It also allows parents and carers to report a child's absence.

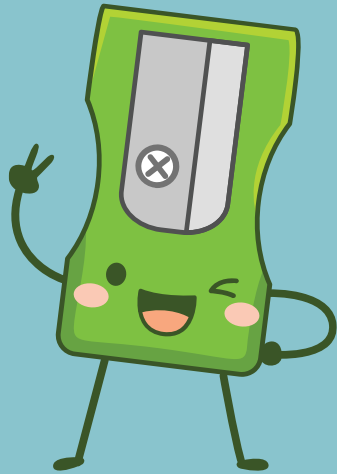
Another vital feature of ReachMoreParents is its **parents' evening booking system**. Parents are able to view available time slots and book appointments with teachers directly through the app or website. This gives families flexibility to choose times that suit them and helps the school organise these events smoothly.

Overall, ReachMoreParents plays a crucial role in strengthening the partnership between school and home. It helps parents stay informed, engaged, and involved in their child's education. By centralising communication and making it easy for parents to access key information and services, ReachMoreParents supports a positive and connected school community.

The logo for ReachMoreParents by Weduc is contained within a white rounded square with a red border. The text 'reach' is in a bold, dark grey sans-serif font. 'more' is in a red sans-serif font with a white play button icon inside the letter 'o'. 'parents' is in a bold, dark grey sans-serif font. 'by weduc' is in a smaller, dark grey sans-serif font at the bottom.

reach  
more  
parents  
by weduc

# Attendance



## Getting Your Child to School Really Matters



### Did You Know... ?

In a School Year, If Your Child is Late Every Day By...	Your Child Would Have Lost Approximately...	or They Would Have Missed Approximately...
5 Minutes	3.5 Days from School	20 Lessons
10 Minutes	7 Days from School	41 Lessons
15 Minutes	10 Days from School	55 Lessons
20 Minutes	14.5 Days from School	82 Lessons
30 Minutes	22 Days from School	123 Lessons

Please Encourage Punctuality to Maintain Attendance

## ABSENCE = LOST OPPORTUNITY



### Did You Know... ?

If Your Child's Attendance During the School Year...	Your Child Would Have Lost Approximately...	or They Would Have Missed Approximately...
was 95%	9 Days from School	50 Lessons
was 90%	19 Days from School	100 Lessons
was 85%	29 Days from School	150 Lessons
was 80%	38 Days from School	200 Lessons
was 75%	48 Days from School	250 Lessons

Getting Your Child to School Really Matters

# School Uniform

## For the whole school

Red or black jumper, cardigan or fleece. No hoodies

Grey or black trousers, skirt or pinafore dress

In the summer months a red and white gingham dress may be worn

## Nursery, Reception, Years 1 and Year 2

Red or white polo shirt or white shirt or blouse

## Years 3, 4, 5 and 6

White or Black polo shirt or white shirt or blouse

Suitable footwear must be worn. No Crocs



## Jewellery

Stud earrings only. No necklaces or bracelets

Earrings will need to be taken out or covered with a plaster whilst doing PE

Uniform items with the school logo can be purchased from <https://myclothing.com>

There is no requirement for children to wear uniform with the school's logo on, but there is an expectation that the children wear school colours, i.e. red or black jumper. These can be bought from a range of shops e.g. Asda, Tesco.

Book Bags and PE Bags printed with the school logo can be purchased on the Parent Pay app and collected from the school office

## PE Kit

Your child will need to come into school dressed in their PE kit on their PE day

Indoor: Red or white t-shirt, black shorts and plimsoles

Outdoor: Jogging bottoms, zip up jacket or sweatshirt and trainers. No hoodies

### Indoor



### Outdoor



# Behaviour



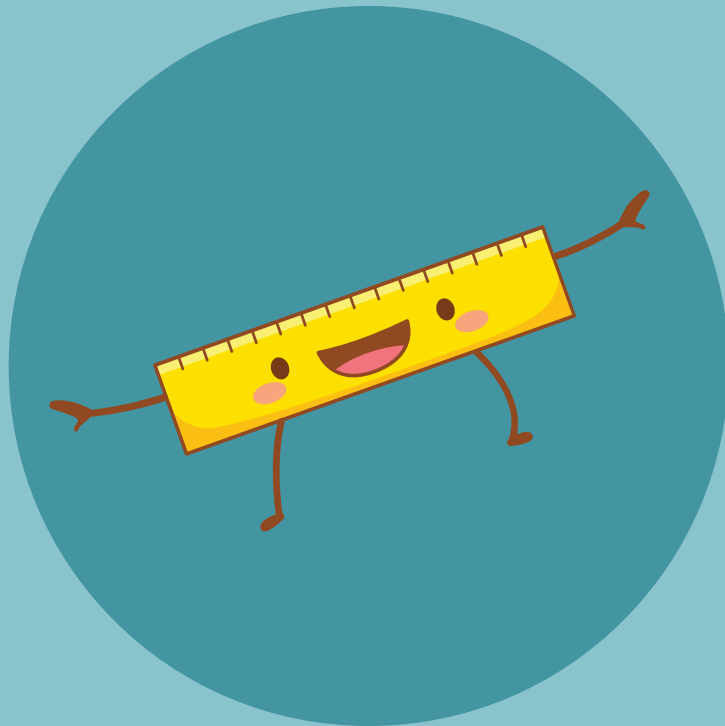
## IT'S GOOD TO BE GREEN

We use the Good to be Green behaviour reward system. In each class from Years 1 to 6 there is a Good to be Green wall chart. Every child has a green card, showing that they are "Good to be Green". At the start of every day, every child will be green. During the day, children who follow the school and class rules stay on a green card.

However, children who make the wrong choices and don't follow the rules will be given a yellow warning card. If they continue to make the wrong choices, they will be given a red Consequence card. In this instance, staff will carry out some restorative work with the child in an attempt to ensure that there won't be any repeated behaviour.

## Wolsey Warehouse tokens

Warehouse tokens are awarded to a child for displaying good behaviour, producing work to the best of their ability, displaying our school values and for having 100% attendance each school week. Each child is allocated a container, which acts as a wallet. Tickets are cumulative and, on the Friday, at the end of each half-term, all children enjoy visiting the **Wolsey Warehouse** with their class teacher to choose a reward.





# Ways you can help your child at home

- Homework should be completed weekly.
- Times Tables Rockstars helps children to practise quick mental recall of times tables facts.
- Daily reading helps your child to become a fluent and confident reader. Asking your child questions based on their reading book also improves comprehension skills.
- Accelerated Reader quizzes assess how much your child has read and understood.



Childline has launched a website aimed at children under the age of 12. This provides age appropriate content on topics including: bullying, family, friends, feelings, school, abuse and staying safe. It also includes games and therapeutic tools for young visitors to play and express how they are feeling.

It can be accessed here: <https://www.childline.org.uk/kids>